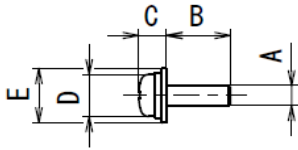


Reference table of the specified screws

2021.03

* Within the range of the screw sizes and lengths below,
 there may be unique screw shapes or structures that may not be compatible with the feeder unit.
 If you use a tapping screw with a sharp point or a rough pitch, the wear may be severe.
 It is desirable that the B dimension is larger than the D and E dimensions.



Reference table of the specified screws						Shape of screw head						
Screw feeder series	Screw size	Screw shaft diameter A(φ)	Screw head diameter D(φ)	Screw head thickness C(mm)	Screw shaft length B(mm)	No. 0 pan head	Pan head	Pan head			bind	Counter sunk head
								Sems	Double sems	Washer head		
NSB NSR NSBI NSRI	φ1.0	0.9~0.95	1.8~4.5	0.35~1.0	1.6~10	○						
	φ1.2	1.1~1.15	1.8~4.5	0.35~1.0	1.9~10	○						
	φ1.4	1.3~1.4	2.0~4.5	0.35~1.0	2.2~10	○						
	φ1.7	1.6~1.7	2.5~4.5	0.35~1.0	2.7~10	○						
	φ2.0	1.9~2.1	3.0~6.0	0.35~4.5	3.2~20		○	○	○	○	○	○
	φ2.3	2.2~2.4	3.3~6.0	0.35~4.5	3.7~20		○	○	○	○	○	○
	φ2.6	2.5~2.7	3.6~6.0	0.35~4.5	4.2~20		○	○	○	○	○	○
	φ3.0	2.9~3.2	4.0~6.0	0.35~4.5	4.8~20		○	○	○	○	○	○

* Compatible with washer diameter up to 9 mm, thickness 0.35 to 1.0mm.

Reference table of the specified screws							Shape of screw head				
Screw feeder series	Screw size	Screw shaft diameter A(φ)	Screw head diameter D(φ)	Washer diameter E(φ)	Screw head thickness C(mm)	Screw shaft length B(mm)	Pan head	Pan head			bind
								Sems	Double sems	Washer head	
OM-26M OM-26R	φ2.0	1.9~2.1	3.0~6.0	3.0~10	0.35~6	3.2~25	○	○	○	○	○
	φ2.3	2.2~2.4	3.3~6.0	3.3~10	0.35~6	3.7~25	○	○	○	○	○
	φ2.6	2.5~2.7	3.6~6.0	3.6~10	0.35~6	4.2~25	○	○	○	○	○
	φ3.0	2.9~3.2	4.0~6.0	4.0~11	0.35~6	4.8~25	○	○	○	○	○
	φ3.5	3.4~3.7	4.8~8.0	4.8~11	0.35~6.5	5.6~25	○	○	○	○	○
	φ4.0	3.8~4.2	5.4~8.0	5.4~12	0.35~6.5	6.4~25	○	○	○	○	○
	φ5.0	4.8~5.2	6.2~10	6.2~12	0.35~7	8.0~25	○	○	○	○	○
	φ6.0	5.8~6.2	7.2~11	7.2~12	0.35~7.5	9.6~25	○	○	○	○	○

* Compatible with washer thickness 0.35 to 1.6 mm.

Reference table of the specified screws							Screw head shape	
Screw feeder series	Screw size	Screw shaft diameter A(φ)	Screw head diameter D(φ)	Washer diameter E(φ)	Screw head thickness C(mm)	Screw shaft length B(mm)	No. 0 pan head	Pan head
SS-12 SSI-12M SSI-12R	φ1.0	0.9~0.95	1.8~2.0	-	0.35~1.0	1.6~10	○	
	φ1.2	1.1~1.15	1.8~2.3	-	0.35~1.0	1.9~10	○	
	φ1.4	1.3~1.4	2.0~2.5	-	0.35~1.0	2.2~10	○	
	φ1.7	1.6~1.7	2.5~3.0	-	0.35~1.0	2.7~10	○	
	φ2.0	1.9~2.1	3.0~3.5	-	0.35~1.3	3.2~16		○
SS-23 SSI-23M SSI-23R	φ2.3	2.2~2.4	3.5~4.0	-	0.35~1.5	3.7~16		○
	φ2.6	2.5~2.7	4.0~4.5	-	0.35~1.7	4.2~16		○
	φ3.0	2.9~3.2	5.0~5.5	-	0.35~2.0	4.8~16		○

Applicable Screw Reference Table							Screw head shape					
Screw feeder series	Screw nominal diameter	Screw shaft diameter A(φ)	Screw head diameter D(φ)	Washer diameter E(φ)	Screw head thickness C(mm)	Screw shaft length B(mm)	Pan head	Pan head			Bind	Counter-sunk
								Sems	Double sems	Washer head		
NJ NJR	φ2.0	1.8~2.1	3.0~3.5	3.0~8.0	0.5~5.5	3.2~18	○	○	○	○	○	○
	φ2.3	2.1~2.4	3.0~4.0	3.0~8.0	0.5~5.5	3.7~18	○	○	○	○	○	○
	φ2.6	2.4~2.7	3.6~4.5	3.6~8.0	0.5~5.5	4.2~18	○	○	○	○	○	○
	φ3.0	2.8~3.1	4.0~5.5	4.0~8.0	0.5~5.5	4.8~18	○	○	○	○	○	○
	φ3.5	3.3~3.7	4.8~8.0	4.8~12	0.5~8.0	5.6~18	○	○	○	○	○	○
	φ4.0	3.8~4.1	5.4~8.0	5.4~12	0.5~8.0	6.4~18	○	○	○	○	○	○
	φ5.0	4.8~5.1	6.2~10.0	6.2~12	0.5~8.0	8.0~18	○	○	○	○	○	○

* Compatible with washer thicknesses from 0.4 to 1.0 mm.

Screw feeder series	Applicable Screw Reference Table						Screw head shape					
	Screw nominal diameter	Screw shaft diameter A(φ)	Screw head diameter D(φ)	Washer diameter E(φ)	Screw head thickness C(mm)	Screw shaft length B(mm)	Pan head	Pan head			Bind	Counter-sunk
								Sems	Double sems	Washer head		
NJL NJRL	φ2.0	1.8~2.1	3.0~3.5	3.0~8.0	0.5~5.5	3.2~25	○	○	○	○	○	○
	φ2.3	2.1~2.4	3.0~4.0	3.0~8.0	0.5~5.5	3.7~25	○	○	○	○	○	○
	φ2.6	2.4~2.7	3.6~4.5	3.6~8.0	0.5~5.5	4.2~25	○	○	○	○	○	○
	φ3.0	2.8~3.1	4.0~5.5	4.0~8.0	0.5~5.5	4.8~25	○	○	○	○	○	○
	φ3.5	3.3~3.7	4.8~8.0	4.8~12	0.5~8.0	5.6~25	○	○	○	○	○	○
	φ4.0	3.8~4.1	5.4~8.0	5.4~12	0.5~8.0	6.4~25	○	○	○	○	○	○
φ5.0	4.8~5.1	6.2~10.0	6.2~12	0.5~8.0	8.0~25	○	○	○	○	○	○	

* Compatible with washer thicknesses from 0.4 to 1.0 mm.

Screw feeder series	Applicable Screw Reference Table						Screw head shape					
	Screw nominal diameter	Screw shaft diameter A(φ)	Screw head diameter D(φ)	Washer diameter E(φ)	Screw head thickness C(mm)	Screw shaft length B(mm)	Pan head	Pan head			Bind	Counter-sunk
								Sems	Double sems	Washer head		
FM-36 FME-36	φ3.0	2.8~3.1	4.0~5.5	4.0~8.0	1.0~5.5	4.8~25	○	○	○	○	○	○
	φ3.5	3.3~3.7	4.8~8.0	4.8~12.0	1.0~8.0	5.6~25	○	○	○	○	○	○
	φ4.0	3.8~4.1	5.4~8.0	5.4~12.0	1.0~8.0	6.4~25	○	○	○	○	○	○
	φ5.0	4.8~5.1	6.2~10.0	6.2~12.0	1.0~8.0	8.0~25	○	○	○	○	○	○
	φ6.0	5.8~6.2	7.2~12.0	7.2~12.0	1.0~8.0	9.6~25	○	○	○	○	○	○

* Compatible with washer thicknesses from 0.5 to 1.6 mm.

Screw size	Screw feeder model	Reference table of the specified screws							Screw head shape					
		Screw size	Screw shaft diameter A(φ)	Screw head diameter D(φ)	Washer diameter E(φ)	Washer thickness (mm)	Screw head thickness C(mm)	Screw shaft length B(mm)	Pan head	Pan head			Bind	Counter-sunk
										Sems	Double sems	Washer head		
NJ	NJ-4560(T003)	φ6.0	5.8~6.2	7.2~13	7.2~13	0.5~1.6	0.5~8	9.6~18	○	○	○	○	○	○
NJR	NJR-4560(T002)	φ6.0	5.8~6.2	7.2~12	7.2~12	0.5~1.6	0.5~8	9.6~18	○	○	○	○	○	○
NJRL	NJRL-4560(T090)	φ6.0	5.8~6.2	7.2~12	7.2~12	0.5~1.6	0.5~8	9.6~25	○	○	○	○	○	○
NSB	NSB-35(T048)	φ3.5	3.3~3.5	4.8~8	4.8~9	0.35~1.0	0.35~5	5.6~20	○	○	○	○	○	○
	NSB-40(T049)	φ4.0	3.8~4.0	5.4~8	5.4~9	0.35~1.0	0.35~5	6.4~20	○	○	○	○	○	○
NSR	NSR-35(T035)	φ3.5	3.3~3.5	4.8~8	4.8~9	0.35~1.0	0.35~5	5.6~20	○	○	○	○	○	○
	NSR-40(T036)	φ4.0	3.8~4.0	5.4~8	5.4~9	0.35~1.0	0.35~5	6.4~20	○	○	○	○	○	○
NSBI	NSBI-35(T177)	φ3.5	3.3~3.5	4.8~8	4.8~9	0.35~1.0	0.35~5	5.6~20	○	○	○	○	○	○
	NSBI-40(T178)	φ4.0	3.8~4.0	5.4~8	5.4~9	0.35~1.0	0.35~5	6.4~20	○	○	○	○	○	○
NSRI	NSRI-35(T132)	φ3.5	3.3~3.5	4.8~8	4.8~9	0.35~1.0	0.35~5	5.6~20	○	○	○	○	○	○
	NSRI-40(T133)	φ4.0	3.8~4.0	5.4~8	5.4~9	0.35~1.0	0.35~5	6.4~20	○	○	○	○	○	○
FM-36	FM-3626(T017)	φ2.6	2.4~2.7	3.6~4.5	3.6~8.0	0.5~1.6	1.0~5.5	4.8~25	○	○	○	○	○	○

* For screws that deviate from the guideline, please contact us with the screw drawings.