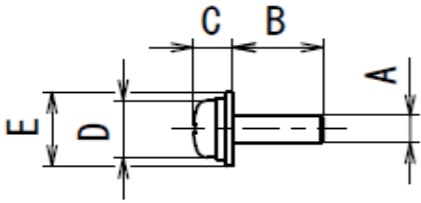


Reference table of the specified screws

OHTAKE-ROOT KOGYO CO., LTD

\* Within the range of the screw sizes and lengths below, there may be unique screw shapes or structures that may not be compatible with the feeder unit. If you use a tapping screw with a sharp point or a rough pitch, the wear may be severe.



Reference table of the specified screws						Shape of screw head						
Screw feeder series	Screw size	Screw shaft diameter A(φ)	Screw head diameter D(φ)	Screw head thickness C(mm)	Screw shaft length B(mm)	Pan head						
						Pan head	Sems	Double sems	Washer head	bind	Flat head	Counter sunk head
NSB NSR NSBI NSRI	φ 1.0	0.9~0.95	1.2~4.5	0.35~1.0	1.6~10	○					○	
	φ 1.2	1.1~1.15	1.4~4.5	0.35~1.0	1.8~10	○					○	
	φ 1.4	1.3~1.4	1.7~4.5	0.35~1.0	2.0~10	○					○	
	φ 1.7	1.6~1.7	2.0~4.5	0.35~1.0	2.3~10	○					○	
	φ 2.0	1.9~2.1	2.4~6	0.35~4.5	2.6~20	○	○	○	○	○	○	○
	φ 2.3	2.2~2.4	2.7~6	0.35~4.5	2.9~20	○	○	○	○	○	○	○
	φ 2.6	2.5~2.7	3.0~6	0.35~4.5	3.2~20	○	○	○	○	○	○	○
φ 3.0	2.9~3.2	3.5~6	0.35~4.5	3.6~20	○	○	○	○	○	○	○	

\* Compatible with washer diameter up to 9 mm, thickness 0.35 to 1.0mm.

Reference table of the specified screws							Shape of screw head					
Screw feeder series	Screw size	Screw shaft diameter A(φ)	Screw head diameter D(φ)	Washer diameter E(φ)	Screw head thickness C(mm)	Screw shaft length B(mm)	Pan head					
							Pan head	Sems	Double sems	Washer head	bind	Flat head
OM-26M OM-26R	φ 2.0	1.9~2.1	2.4~6	2.4~10	0.35~6	2.6~25	○	○	○	○	○	○
	φ 2.3	2.2~2.4	2.7~6	2.7~10	0.35~6	2.9~25	○	○	○	○	○	○
	φ 2.6	2.5~2.7	3.0~6	3.0~10	0.35~6	3.2~25	○	○	○	○	○	○
	φ 3.0	2.9~3.2	3.5~6	3.5~11	0.35~6	3.6~25	○	○	○	○	○	○
	φ 3.5	3.4~3.7	4.0~8	4.0~11	0.35~6.5	4.1~25	○	○	○	○	○	○
	φ 4.0	3.8~4.2	4.5~8	4.5~12	0.35~6.5	4.6~25	○	○	○	○	○	○
	φ 5.0	4.8~5.2	5.5~10	5.5~12	0.35~7	5.6~25	○	○	○	○	○	○
φ 6.0	5.8~6.2	6.5~11	6.5~12	0.35~7.5	6.6~25	○	○	○	○	○	○	

\* Compatible with washer thickness 0.35 to 1.6 mm.

Reference table of the specified screws							Shape of screw head					
Screw feeder series	Screw size	Screw shaft diameter A(φ)	Screw head diameter D(φ)	Washer diameter E(φ)	Screw head thickness C(mm)	Screw shaft length B(mm)	Pan head					
							Precision screw	Sems	Double sems	Washer head	Bind	Counter sunk head
SS-12 SSI-12M SSI-12R	φ 1.0	0.9~0.95	1.2~2.0	-	0.35~1.0	1.6~10	○					
	φ 1.2	1.1~1.15	1.4~2.3	-	0.35~1.0	1.8~10	○					
	φ 1.4	1.3~1.4	1.7~2.5	-	0.35~1.0	2.0~10	○					
	φ 1.7	1.6~1.7	2.0~3.0	-	0.35~1.0	2.3~10	○					
	φ 2.0	1.9~2.1	2.4~4.0	2.4~6.0	0.35~1.3	2.6~16	○	○		○	○	○
SS-23 SSI-23M SSI-23R	φ 2.3	2.2~2.4	2.7~4.0	2.7~7.0	0.35~1.5	2.9~16	○	○	○	○	○	○
	φ 2.6	2.5~2.7	3.0~4.5	3.0~7.5	0.35~1.7	3.2~16	○	○	○	○	○	○
	φ 3.0	2.9~3.2	3.5~5.5	3.5~8.0	0.35~2.0	3.6~16	○	○	○	○	○	○

\* Compatible with washer thicknesses from 0.35 to 1.0 mm.

Applicable Screw Reference Table							Screw head shape					
Screw feeder series	Screw nominal diameter	Screw shaft diameter A(φ)	Screw head diameter D(φ)	Washer diameter E(φ)	Screw head thickness C(mm)	Screw shaft length B(mm)	Pan head					
							Pan head	Sems	Double sems	Washer head	Bind	Flat
NJ NJR	φ 2.0	1.8~2.1	3.0~3.5	3.0~8.0	0.5~5.5	2.6~18	○	○	○	○	○	○
	φ 2.3	2.1~2.4	3.0~4.0	3.0~8.0	0.5~5.5	2.9~18	○	○	○	○	○	○
	φ 2.6	2.4~2.7	3.6~4.5	3.6~8.0	0.5~5.5	3.2~18	○	○	○	○	○	○
	φ 3.0	2.8~3.1	4.0~5.5	4.0~8.0	0.5~5.5	3.6~18	○	○	○	○	○	○
	φ 3.5	3.3~3.7	4.8~8.0	4.8~12	0.5~8.0	4.1~18	○	○	○	○	○	○
	φ 4.0	3.8~4.1	5.4~8.0	5.4~12	0.5~8.0	4.6~18	○	○	○	○	○	○
φ 5.0	4.8~5.1	6.2~10.0	6.2~12	0.5~8.0	5.6~18	○	○	○	○	○	○	

Applicable Screw Reference Table							Screw head shape					
Screw feeder series	Screw nominal diameter	Screw shaft diameter A(φ)	Screw head diameter D(φ)	Washer diameter E(φ)	Screw head thickness C(mm)	Screw shaft length B(mm)	Pan head					
							Pan head	Sems	Double sems	Washer head	Bind	Flat
NJL NJRL	φ 2.0	1.8~2.1	3.0~3.5	3.0~8.0	0.5~5.5	2.6~25	○	○	○	○	○	○
	φ 2.3	2.1~2.4	3.0~4.0	3.0~8.0	0.5~5.5	2.9~25	○	○	○	○	○	○
	φ 2.6	2.4~2.7	3.6~4.5	3.6~8.0	0.5~5.5	3.2~25	○	○	○	○	○	○
	φ 3.0	2.8~3.1	4.0~5.5	4.0~8.0	0.5~5.5	3.6~25	○	○	○	○	○	○
	φ 3.5	3.3~3.7	4.8~8.0	4.8~12	0.5~8.0	4.1~25	○	○	○	○	○	○
	φ 4.0	3.8~4.1	5.4~8.0	5.4~12	0.5~8.0	4.6~25	○	○	○	○	○	○
φ 5.0	4.8~5.1	6.2~10.0	6.2~12	0.5~8.0	5.6~25	○	○	○	○	○	○	

Applicable Screw Reference Table							Screw head shape					
Screw feeder series	Screw nominal diameter	Screw shaft diameter A(φ)	Screw head diameter D(φ)	Washer diameter E(φ)	Screw head thickness C(mm)	Screw shaft length B(mm)	Pan head					
							Pan head	Sems	Double sems	Washer head	Bind	Flat
FM-36 FME-36	φ 3.0	2.8~3.1	4.0~5.5	4.0~8.0	1.0~5.5	3.6~25	○	○	○	○	○	○
	φ 3.5	3.3~3.7	4.8~8.0	4.8~12.0	1.0~8.0	4.1~25	○	○	○	○	○	○
	φ 4.0	3.8~4.1	5.4~8.0	5.4~12.0	1.0~8.0	4.6~25	○	○	○	○	○	○
	φ 5.0	4.8~5.1	6.2~10.0	6.2~12.0	1.0~8.0	5.6~25	○	○	○	○	○	○
	φ 6.0	5.8~6.2	7.2~12.0	7.2~12.0	1.0~8.0	5.6~25	○	○	○	○	○	○

## Reference table of the specified screws (Special specification)

OHTAKE-ROOT KOGYO CO., LTD

\* Within the range of the screw sizes and lengths below, there may be unique screw shapes or structures that may not be compatible with the feeder unit.  
If you use a tapping screw with a sharp point or a rough pitch, the wear may be severe.

		Reference table of the specified screws						Screw head shape							
Screw size	Screw feeder model	Screw size	Screw shaft diameter A(φ)	Screw head diameter D(φ)	Washer diameter E(φ)	Screw head thickness C(mm)	Screw shaft length B(mm)	Pan head	Pan head			Bind	Flat	Counter-sunk	Hexagon flange bolt
									Sems	Double sems	Washer head				
NJ	NJ-4560(T003)	φ 6.0	5.8~6.2	7.2~13	7.2~13	0.5~8	6.6~18	○	○	○	○	○	○	○	○
NJR	NJR-4560(T002)	φ 6.0	5.8~6.2	7.2~12	7.2~12	0.5~8	6.6~18	○	○	○	○	○	○	○	○
NJRL	NJRL-4560(T090)	φ 6.0	5.8~6.2	7.2~12	7.2~12	0.5~8	6.6~25	○	○	○	○	○	○	○	○
NSB	NSB-35(T048)	φ 3.5	3.3~3.5	4.8~8	4.8~9	0.35~5	3.6~20	○	○	○	○	○	○	○	○
	NSB-40(T049)	φ 4.0	3.8~4.0	5.4~8	5.4~9	0.35~5	4.6~20	○	○	○	○	○	○	○	○
NSR	NSR-35(T035)	φ 3.5	3.3~3.5	4.8~8	4.8~9	0.35~5	3.6~20	○	○	○	○	○	○	○	○
	NSR-40(T036)	φ 4.0	3.8~4.0	5.4~8	5.4~9	0.35~5	4.6~20	○	○	○	○	○	○	○	○
NSBI	NSBI-35(T177)	φ 3.5	3.3~3.5	4.8~8	4.8~9	0.35~5	3.6~20	○	○	○	○	○	○	○	○
	NSBI-40(T178)	φ 4.0	3.8~4.0	5.4~8	5.4~9	0.35~5	4.6~20	○	○	○	○	○	○	○	○
NSRI	NSRI-35(T132)	φ 3.5	3.3~3.5	4.8~8	4.8~9	0.35~5	3.6~20	○	○	○	○	○	○	○	○
	NSRI-40(T133)	φ 4.0	3.8~4.0	5.4~8	5.4~9	0.35~5	4.6~20	○	○	○	○	○	○	○	○

